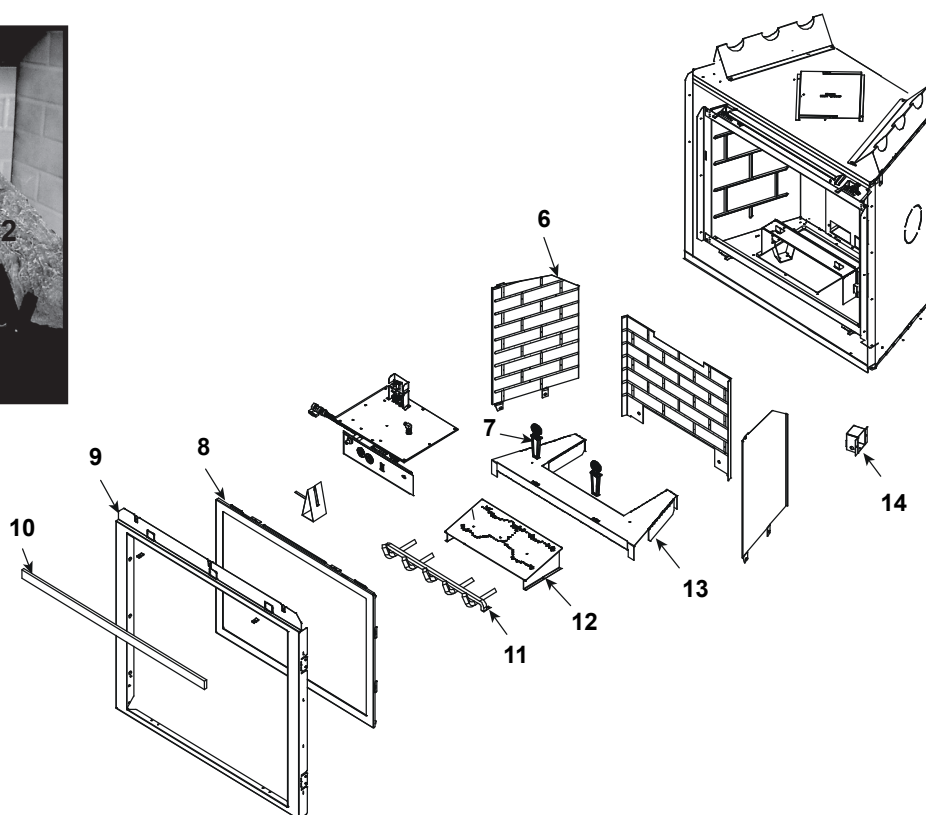


Log Set Assembly



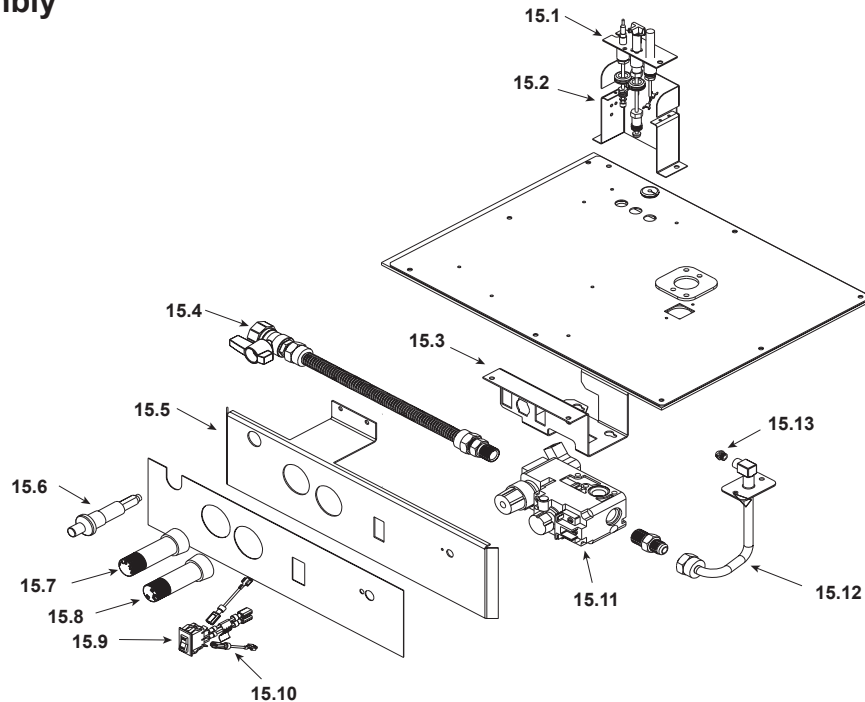
IMPORTANT: THIS IS DATED INFORMATION. Parts must be ordered from a dealer or distributor. **Hearth and Home Technologies does not sell directly to consumers.** Provide model number and serial number when requesting service parts from your dealer or distributor.



**Stocked
at Depot**

| ITEM | DESCRIPTION | COMMENTS | PART NUMBER | |
|------|-----------------------------------|--|-------------|---|
| | Log Set Assembly | | LOGS-2017 | Y |
| 1 | Log 1 | No longer available, Must order complete assembly | SRV2016-701 | |
| 2 | Log 2 | | SRV385-736 | |
| 3 | Log 3 | | SRV278-704 | |
| 4 | Log 4 | | SRV2018-704 | |
| 5 | Log 5 | | SRV780-707 | |
| 6 | Refractory Kit (Sold as set only) | No longer available | BRICK-295 | |
| 7 | Andirons, Cast | | 80784 | |
| 8 | Glass Door Assembly | | GLA-6TROC | Y |
| 9 | Surround | No longer available | SRV2101-260 | |
| 10 | Insulation Board | | 385-401 | |
| 11 | Log Grate | No longer available | 2017-001 | |
| 12 | Burner NG | | 2017-003 | Y |
| 13 | Base Refractory NG, LP | No longer available | 292-124 | |
| 14 | Junction Box | | SRV4021-013 | Y |

#15 Valve Assembly



IMPORTANT: THIS IS DATED INFORMATION. Parts must be ordered from a dealer or distributor. **Hearth and Home Technologies does not sell directly to consumers.** Provide model number and serial number when requesting service parts from your dealer or distributor.



**Stocked
at Depot**

| ITEM | DESCRIPTION | COMMENTS | PART NUMBER | |
|-------|--------------------------|---------------------|-------------|---|
| 15.1 | Pilot Assembly NG | | 4021-736 | Y |
| | Pilot Assembly LP | | 4021-737 | Y |
| | Pilot Tube | | SRV485-301 | Y |
| | Thermocouple | | 446-511 | Y |
| | Thermopile | | 2103-512 | Y |
| 15.2 | Pilot Bracket | No longer available | 385-164 | |
| 15.3 | Valve Bracket | | 2025-101 | |
| 15.4 | Flex Ball Valve Assembly | | SRV302-320 | Y |
| 15.5 | Control Panel | No longer available | 295-119 | |
| 15.6 | Piezo Ignitor | | 291-513 | Y |
| 15.7 | Flame Control Knob | No longer available | 571-531 | |
| 15.8 | Pilot Control Knob | No longer available | 571-530 | |
| 15.9 | ON/OFF Rocker Switch | | 060-521A | Y |
| 15.10 | Jumper Wire | | 049-552A | Y |
| 15.11 | Valve NG | | 060-522 | Y |
| | Valve LP | | 060-523 | Y |
| 15.12 | Flexible Gas Connector | | 383-302A | Y |
| 15.13 | Burner Orifice NG (#36C) | | 582-836 | Y |
| | Burner Orifice LP (#51C) | | SRV582-851 | Y |

Additional service part numbers may appear on following page.

Beginning Manufacturing Date: Aug 2003
Ending Manufacturing Date: Jan 2007

IMPORTANT: THIS IS DATED INFORMATION. Parts must be ordered from a dealer or distributor. **Hearth and Home Technologies does not sell directly to consumers.** Provide model number and serial number when requesting service parts from your dealer or distributor.



Stocked at Depot

[illegible]